



SEAPOINT

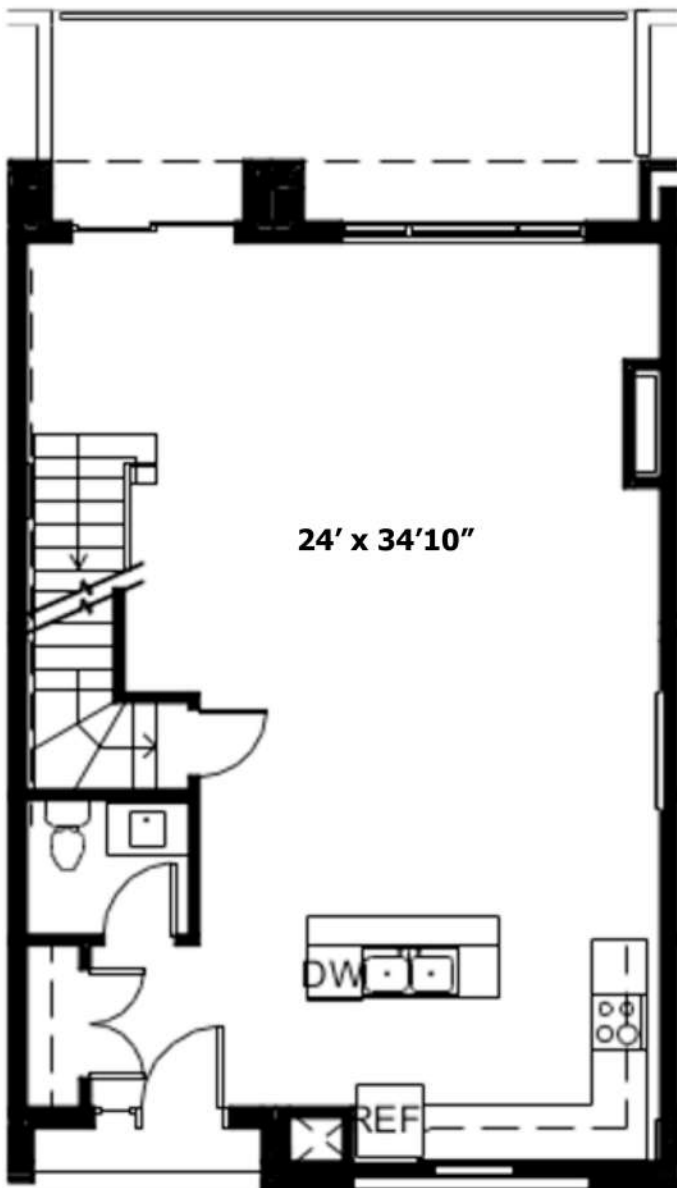
AT HARBOUR ISLE

TOWNHOUSE

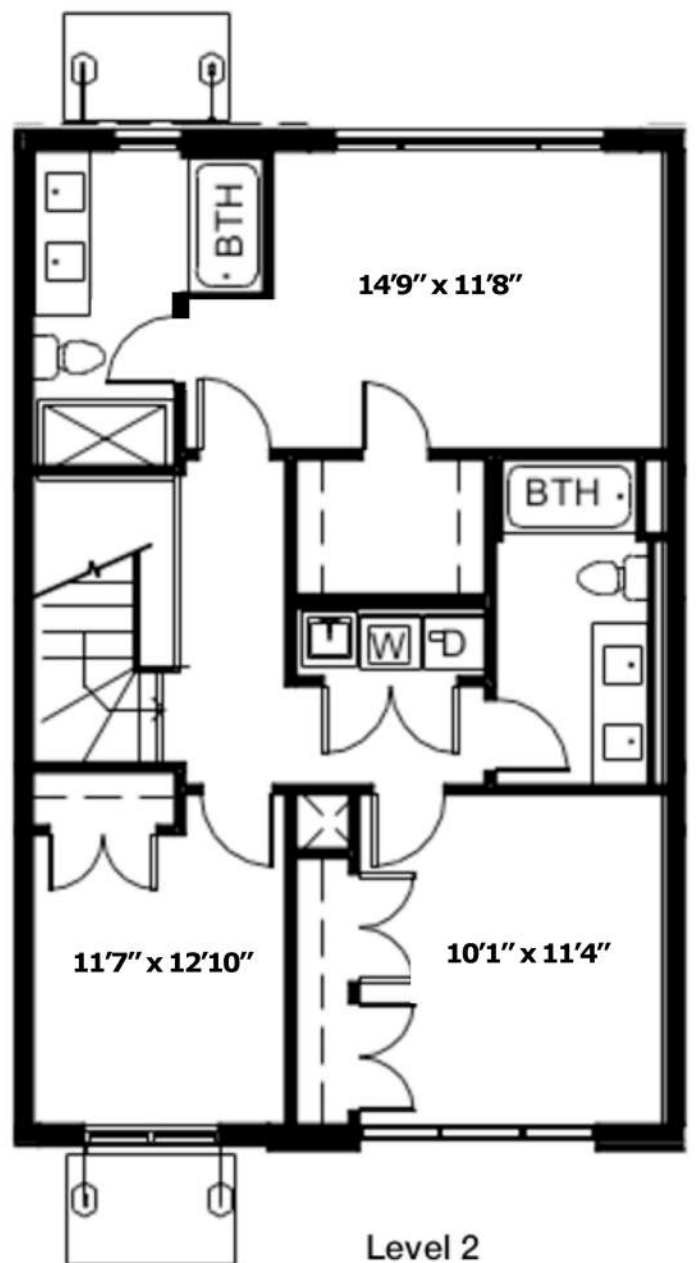
The Lunenburg

3 Bedroom - 1,440 sq.ft.

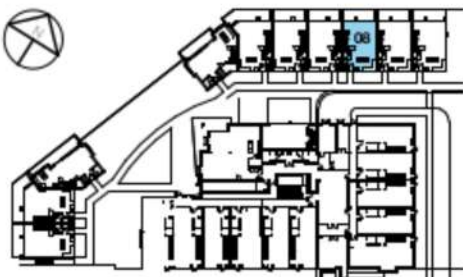
Balcony 162 sq.ft. Total living space 1,602 sq.ft.



Level 1



Level 2



This plan is not to scale and subject to architectural review and revision including without limitation, the Unit being constructed with a layout that is the reverse of that set out above. All materials, specification, details and dimensions, if any, are approximate and subject to change without notice in order to comply with building site conditions and municipal, structural, vendor and/or architectural requirements. Actual floor areas of the Unit may vary up to 10%. Bulkheads, columns and wall buildouts are not shown on this plan and may be located in areas of the Unit as required for, but not limited to, HVAC system, ducting, conduiting and column enclosure protrusions into the unit space. Balconies, Terraces and Patios if any are exclusive use common elements, shown for display purposes only and location and size are subject to change without notice. Window locations, size and type may vary without notice. E.&O.E.